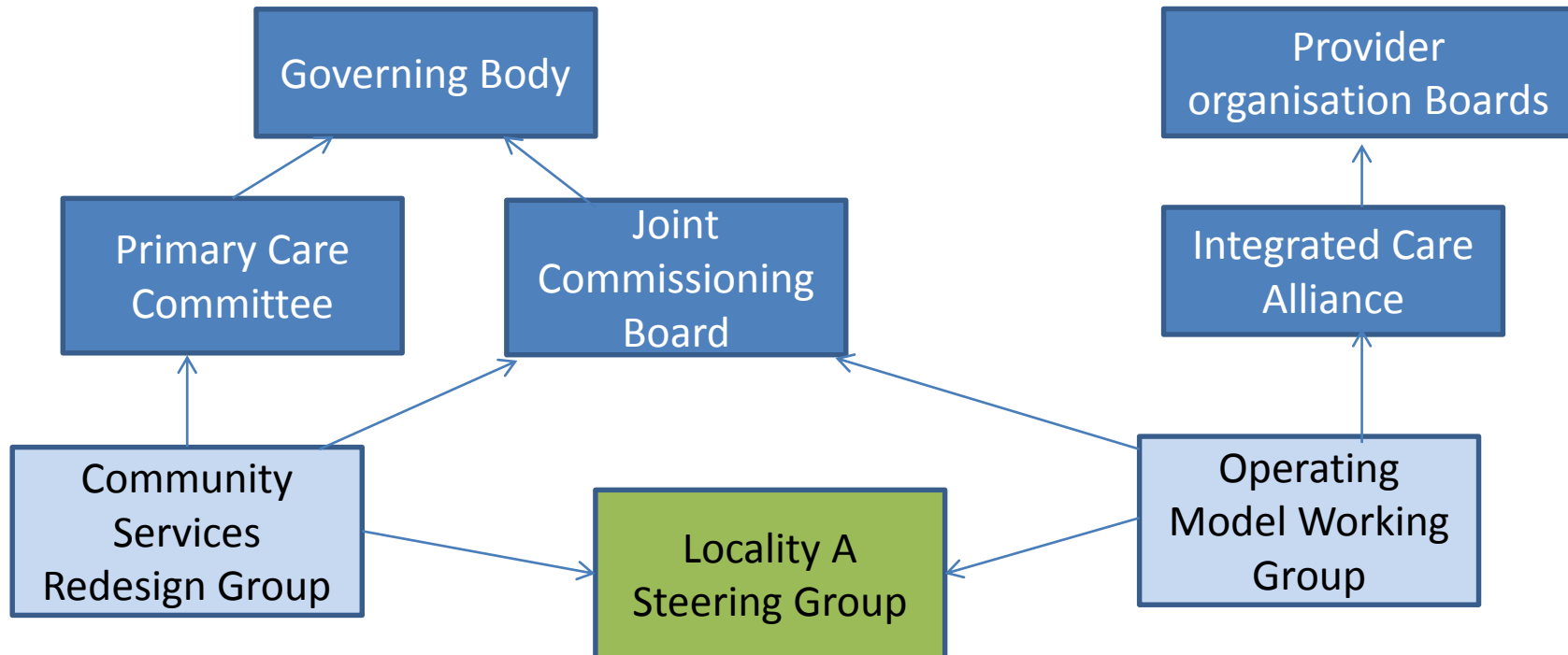


Draft Governance Arrangements – Locality projects



The Locality Steering Groups will be established as partnership groups that are supported to deliver change through clear delegation of responsibilities. **Accountability arrangements for each Steering Group will depend on the nature of the change programme and will need to be clearly articulated in Terms of Reference that are acceptable to the relevant partner organisations.** The Operating Model Working Group will advise all of the Locality Steering Groups on the model of care and will provide clinical leadership across the system. It is Chaired by Dr Ian Tait, the Chair of the CCG's Governing Body. The Redesign Group is a "process group" and will ensure that each Locality Group is supported and established with appropriate governance arrangements and supporting resources (including terms of reference, financial framework, engagement etc).